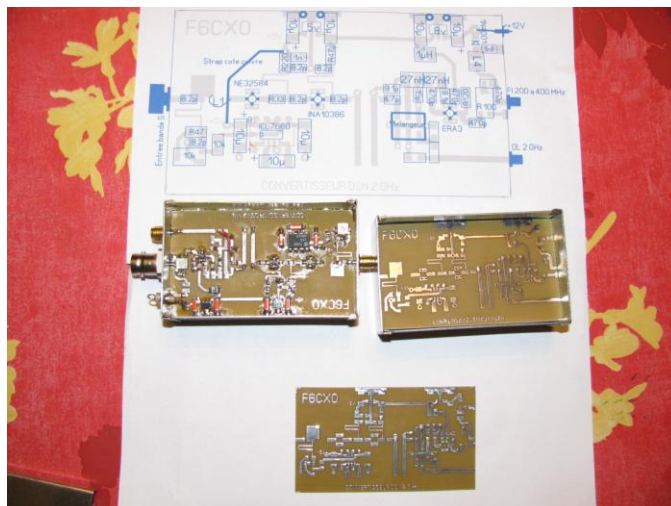
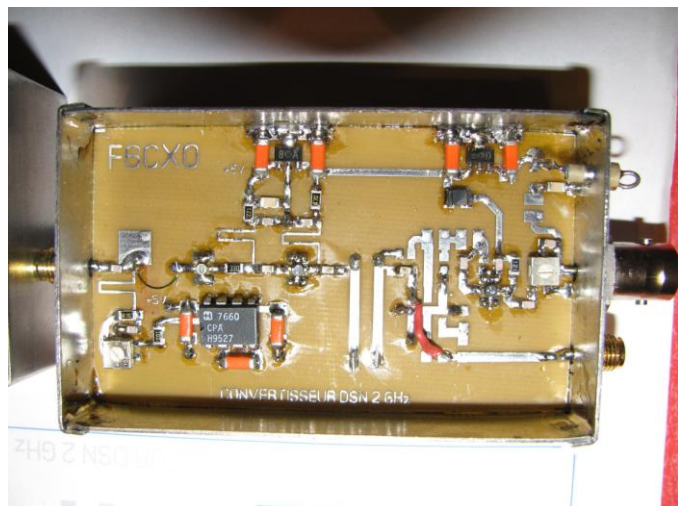


Quelques photos :



Les mesures :

Pas encore.

Liste composants convertisseur DSN F6CXO

RMS30	1	8,50 €	8,50 €	RFE
NE32584	1	7,80 €	7,80 €	RFE
INA10386	1	4,90 €	4,90 €	RFE
ERA3	1	3,90 €	3,90 €	RFE
ICL7660	1	2,60 €	2,60 €	
Régul 7808	1	0,37 €	0,37 €	
Régul 7805	1	0,37 €	0,37 €	
27 nH	2	0,30 €	0,60 €	ED
1µH	1	0,30 €	0,30 €	ED
R ajust 100 ohms	1	1,75 €	1,75 €	ED
R ajust 10K	1	1,75 €	1,75 €	ED
R CMS 1206	9	0,06 €	0,54 €	ED
capas CMS 10µ	7	0,60 €	4,20 €	ED
capas CMS 4,7p	1	0,15 €	0,15 €	ED
capas CMS 8,2p	6	0,15 €	0,90 €	ED
capas CMS 9,1p	2	0,15 €	0,30 €	ED
capas CMS 15p	1	0,15 €	0,15 €	ED
capas CMS 470p	4	0,15 €	0,60 €	ED
capas CMS 1nF	2	0,15 €	0,30 €	ED
Prise SMA Chassis	2	4,50 €	9,00 €	F6CXO
Prise BNC Chassis	1	3,00 €	3,00 €	ED
Boitier TEKO 272	1	7,00 €	7,00 €	ED
Circuit imprimé	1	4,10 €	4,10 €	F6CXO

33,47,47,120,;

TOTAL

63,08 €

Surface Mount Frequency Mixer

RMS-30+ RMS-30

Level 7 (LO Power +7 dBm) 200 to 3000 MHz



Maximum Ratings

Operating Temperature	-40°C to 85°C
Storage Temperature	-55°C to 100°C
RF Power	200mW
IF Current	40mA

Pin Connections

LO	1
RF	4
IF	5
GROUND	2,3,6

Features

- wideband, 200-3000 MHz
- conversion loss, 7.0 dB typ.
- small size, 0.25"x0.31"x0.2"

Applications

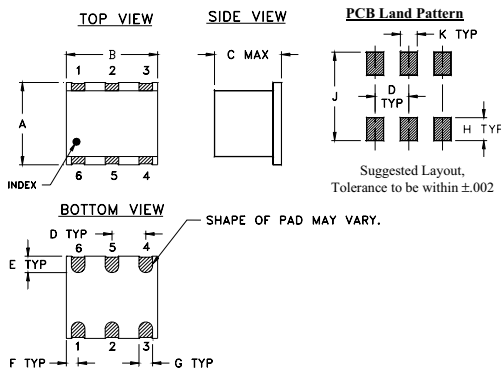
- MMDS
- ISM/PCS/UMTS
- GPS

CASE STYLE: TT240
PRICE: \$6.95 ea. QTY (1-9)

**+ RoHS compliant in accordance
with EU Directive (2002/95/EC)**

The +Suffix identifies RoHS Compliance. See our web site
for RoHS Compliance methodologies and qualifications.

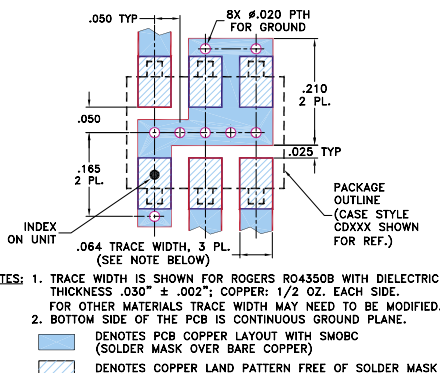
Outline Drawing



Outline Dimensions (inch/mm)

A	B	C	D	E	F
.250	.31	.20	.100	.050	.055
6.35	7.87	5.08	2.54	1.27	1.40
G	H	J	K	wt	
.040	.070	.270	.050	grams	
1.02	1.78	6.86	1.27	0.50	

Demo Board MCL P/N: TB-03
Suggested PCB Layout (PL-052)



Electrical Specifications

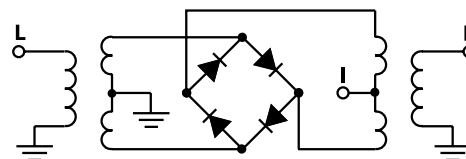
FREQUENCY (MHz)	CONVERSION LOSS (dB)	LO-RF ISOLATION (dB)		LO-IF ISOLATION (dB)		IP3 at center band (dBm)				
		Typ.	Min.	Typ.	Min.					
200-3000	DC-1000	6.5	.20	9.0	9.8	27	17	20	7	11

1 dB COMP.: +1 dBm typ.
For phase detection, DC output positive with in-phase RF & LO.

Typical Performance Data

Frequency (MHz)		Conversion Loss (dB)	Isolation L-R (dB)	Isolation L-I (dB)	VSWR RF Port (:1)	VSWR LO Port (:1)
RF	LO	LO +7 dBm	LO +7 dBm	LO +7 dBm	LO +7 dBm	LO +7 dBm
200.10	230.10	5.30	35.34	22.95	1.59	6.06
400.10	430.10	4.94	45.55	22.74	1.63	3.34
600.09	630.09	4.68	38.09	24.23	1.75	2.59
828.65	858.65	6.27	32.57	30.75	1.81	2.05
1000.07	1030.07	6.43	30.53	30.13	2.20	1.49
1114.35	1144.35	6.16	30.64	23.50	2.56	1.38
1228.63	1258.63	5.88	29.50	21.69	3.00	1.34
1342.92	1372.92	6.03	30.63	23.23	3.60	1.47
1457.20	1487.20	6.87	30.80	25.21	4.40	1.62
1500.00	1530.00	6.95	31.01	25.49	4.81	1.75
1685.76	1655.76	7.08	30.14	20.62	5.49	2.12
1857.18	1827.18	7.22	28.52	16.49	3.82	2.51
1971.47	1941.47	7.26	27.20	14.81	3.19	2.75
2085.75	2055.75	7.12	26.56	13.64	2.97	2.86
2200.03	2170.03	6.95	26.14	12.33	2.76	2.94
2371.45	2341.45	6.77	24.57	11.40	2.44	2.95
2542.87	2512.87	6.62	25.24	13.33	1.85	2.94
2714.30	2684.30	5.98	26.06	14.42	1.35	2.45
2885.72	2855.72	6.24	26.86	14.79	1.60	1.83
3000.00	2970.00	6.95	28.42	16.91	2.52	1.60

Electrical Schematic



Mini-Circuits®
ISO 9001 ISO 14001 CERTIFIED

ALL NEW
minicircuits.com

P.O. Box 350166, Brooklyn, New York 11235-0003 (718) 934-4500 Fax (718) 332-4661 For detailed performance specs & shopping online see Mini-Circuits web site



The Design Engineers Search Engine Provides ACTUAL Data Instantly From MINI-CIRCUITS At: www.minicircuits.com

RF/IF MICROWAVE COMPONENTS

REV. B
M102713
RMS-30
071002
Page 1 of 2

