

NOTES:

- INTERPRET CALLOUTS/SYMBOLS PER ASME Y14.5M-1994
- RECOMMENDED MATING CONNECTOR TORQUE IS 8 lb-in (90 N-cm)
DO NOT EXCEED 12 lb-in (136 N-cm) AS DAMAGE TO CONNECTOR MAY RESULT.

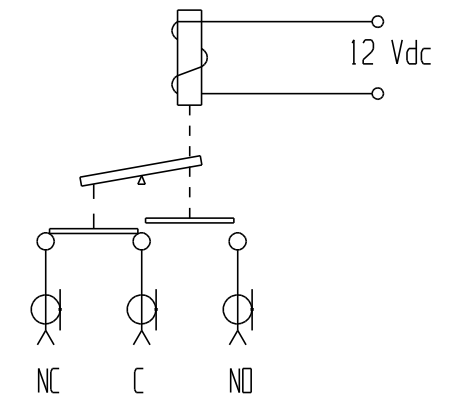
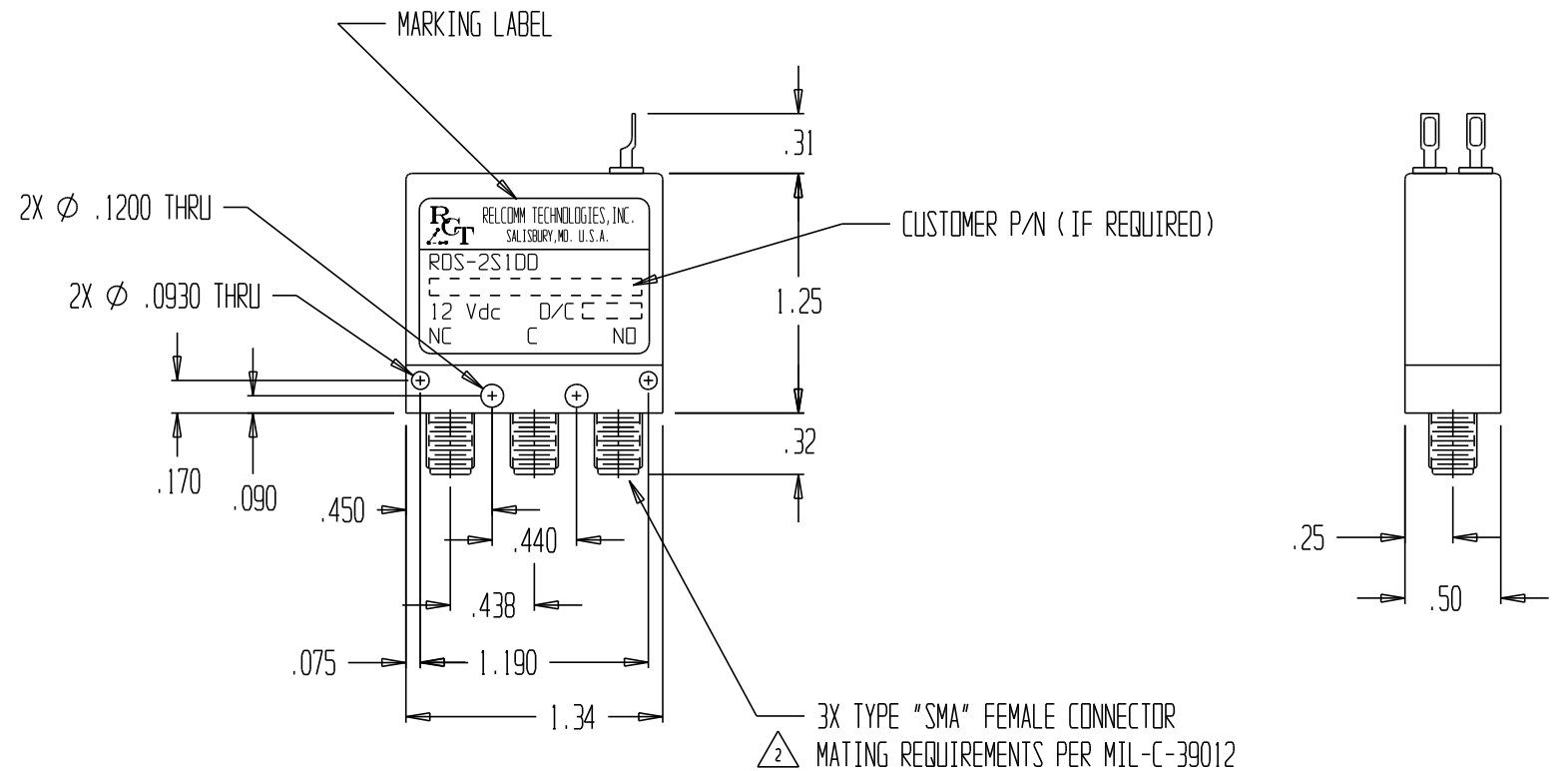
CHARACTERISTICS:

NOMINAL IMPEDANCE (OHM)	50				
FREQUENCY RANGE (GHz)	DC-4	4-8	8-12.4	12.4-18	18-26.5
V.S.W.R. (MAX)	1.2:1	1.3:1	1.4:1	1.5:1	1.6:1
INSERTION LOSS (dB MAX)	0.2	0.3	0.4	0.5	0.6
ISOLATION (dB MIN)	80	70	60	60	50

TEMPERATURE RANGE (OPERATING)	-55°C - +85°C
TEMPERATURE RANGE (STORAGE)	-65°C - +110°C
SWITCHING ACTION	BREAK BEFORE MAKE
OPERATING VOLTAGE (OVER TEMP)	10 - 14 Vdc
PICKUP VOLTAGE (MAX @ 25°C)	9 Vdc
DROPOUT VOLTAGE	> 1.5 Vdc
ACTUATING CURRENT (mA MAX)	263 @ 12 Vdc & 25°C
SWITCHING TIME (MAX)	15 μSEC
LIFE (MIN PER POSITION)	1 * 10 ⁶ CYCLES
WEIGHT (OZ)	1.0 NOM

MATERIALS/FINISH:

HOUSING	ALUMINUM/NICKEL
COVER	ALUMINUM/BLACK ANODIZED
CONNECTORS	STAINLESS STEEL/PASSIVATE
INSULATION	TEFLON
CONTACTS	BERYLLIUM COPPER/GOLD
TERMINALS	Ni-Fe/Sn-70 SOLDER



SCHEMATIC SHOWN IN DE-ENERGIZED POSITION

				UNLESS OTHERWISE SPECIFIED: DIMENSIONS ARE IN INCHES AND INCLUDE PLATING. TOLERANCES .XX ±.02 FRACTIONS ± .XXX ±.010 SURFACE QUALITY .XXXX ±.0050 63/ MAX	DR M. MAGDA 6/30/94 CK J. LAPKE 9/19/96 ENG M. MAGDA 9/19/96 MFG QA	EXCELLENCE BY DESIGN RELCOMM TECHNOLOGIES, INC. 610 BEAM STREET SALISBURY, MARYLAND 21801	TITLE COAXIAL 1P2T RELAY "FAILSAFE"	
4	987	8/14/02		THIRD ANGLE PROJECTION 	THIS DRAWING AND SPECIFICATIONS ARE THE PROPERTY OF RELCOMM TECHNOLOGIES AND SHALL NOT BE REPRODUCED OR COPIED OR USED IN WHOLE OR IN PART AS THE BASIS FOR THE MANUFACTURE OR SALE OF ITEM(S) WITHOUT WRITTEN PERMISSION.		SIZE B	DWG NO. RDS-2S100
REV	ECN NO.	DATE	APPROVAL			SCALE 1:1	DO NOT SCALE DWG	SHEET 1 OF 1